

Initial IQ
Lustre Pastes NF

Technical Manual



GC

Table of Contents

1.0	Introduction	4
2.0	Indications and Shelf Life	4
3.0	Shade Description	5
3.1	Basic colours for Vitapan Classic® Shades	5
3.2	Effect colours for high aesthetic results	6
4.0	Liquids for Lustre Pastes NF	7
5.0	Firing Chart and CTE	8
6.0	Lustre Pastes NF Application	9
6.1	Basic Colour Combination Chart	9
6.2	Basic Step by Step Instructions	10
6.3	Advanced Colour Combination Chart	11
6.4	Advanced Step by Step Instructions	12
6.5	Finishing	13
7.0	Where to use Lustre Pastes NF	14
8.0	Tips and Tricks	15
8.1	Cut Back Technique	16
9.0	FAQ	18

Set contents:

- 1 x Neutral (4g)
- 1 x Value (4g)
- 4 x Body Shades (4g – A, B, C, D)
- 8 x Enamel effect shades
(4g – Vanilla, White, Light Grey,
Dark Grey, Light Blue, Dark Blue,
Incisio, Olive)
- 1 x Diluting Liquid (8ml)
- 1 x Refreshing Liquid (8ml)
- 1 x Mixing dish
- 2 x Brushes
- 1 x Directions for use (pictorial)



Photoshooting: ZTM Michael Brusch – M.B. Dentaltechnik GmbH, Düsseldorf / Germany

ZTM Oliver Heinzle, Götzis, Austria

CDT Mark Bladen, Worcestershire, United Kingdom

1.0 Introduction

Colour deepness and lifelike translucency

GC Initial IQ Lustre Pastes NF (LP NF) are 3-dimensional ceramic stains developed to bring colour depth and lifelike translucency for the complete GC Initial ceramic range. Thanks to their 'New Formula' you can now really bring your crowns and bridges to life with this dedicated Lustre Pastes NF Set, with an optimal match to both low and high CTE ceramics. Available in a ready-to-use consistency, Lustre Pastes NF are based on fine ceramic particles and can be applied in a thicker layer where they will exhibit unsurpassed vitality and create a very natural glaze to your restorations.

Features

- Just one dedicated kit for all different indications for the complete GC Initial ceramic range.
- GC Initial IQ Lustre Pastes NF are based on fine ceramic particles, enabling a thicker application compared to conventional stains.
- A unique paste medium, with a fine thixotropic property for easy and precise application.
- Available in a ready-to-use consistency (1 x Neutral, 1 x Value, 4 x Body Shades, 8 x Enamel Effect Shades).
- The high fluorescence of Lustre Pastes NF ensures the look of natural teeth.

2.0 Indications

Lustre Pastes NF are a one-for-all solution for the complete Initial range from GC. It's possible to use Lustre Pastes NF in a wide CTE range – between 6.9 and 13.3 – in order to work with nearly all types of ceramic.

Lustre Pastes NF represent a modern alternative for conventional staining and glazing, as well as for the colour, brightness, grey value and surface texture corrections of all your ceramic crowns and bridges. Due to the unique properties, it's just a question of minutes to individualise the occlusal surface of your crown and bridge work, to paint on white bands, decalcifications, hair lines and crack lines or to characterise artificial porcelain teeth.

Keep in mind: What you paint (on) is what you get (after firing)

GC Initial IQ Lustre Pastes NF

Set contents:

1x Neutral, 1 x Value, 4 x Body Shades, 8 x Enamel effect shades, Diluting Liquid, Refreshing Liquid, 1 mixing dish, 2 brushes, Picture IFU

Shelf Life

PRODUCT DESCRIPTION	SHELF LIFE
GC Initial IQ Lustre Pastes NF	5 years
GC Initial IQ Lustre Pastes NF Diluting Liquid	4 years
GC Initial IQ Lustre Pastes NF Refreshing Liquid	4 years

*Vita is a registered trademark of Vita Zahnfabrik, Bad Säckingen.

3.0 Shade Description

3.1 Basic colours for Vitapan Classic® Shades



L-N Lustre Neutral – neutral and transparent base paste which can be mixed with all Lustre Pastes NF.



L-A Lustre Body A – base colour for all Vita Classic Shades A.



L-B Lustre Body B – base colour for all Vita Classic Shades B.



L-C Lustre Body C – base colour for all Vita Classic Shades C.



L-D Lustre Body D – base colour for all Vita Classic Shades D.

Note: Mix the material well before use.

3.2 Effect colours for high aesthetic results



L-1 Lustre Enamel
Effect 1 – Vanilla
Tinted white to paint
on the incisial.



L-5 Lustre Enamel
Effect 5 – Light Blue
For small increases
in blue opalescence.



L-2 Lustre Enamel
Effect 2 – White
Pure white to paint
on white spots.



L-6 Lustre Enamel
Effect 6 – Dark Blue
For larger increases
in blue opalescence.



L-3 Lustre Enamel
Effect 3 – Light Grey
For small changes
in the grey value.



L-7 Lustre Enamel
Effect 7 – Incisio
For increasing
transparency.



L-4 Lustre Enamel
Effect 4 – Dark Grey
For larger changes
in the grey value.



L-8 Lustre Enamel
Effect 8 – Olive
To increase the green
value; can be mixed
with all colours.



L-V Lustre Enamel
Effect 9 – Value
To increase brightness.
The effect can be
reduced by mixing
with L-N.

4.0 Liquids for Lustre Pastes NF



Lustre Paste Diluting Liquid:

Diluting Liquid is a special liquid to change the flowability of the Lustre Pastes. It is recommended to have a gel/paste like consistency for the best results with Lustre Pastes NF.

Note:

- If Lustre Pastes are too diluted, there is a reduction in the gloss of the paste after the firing; hence, the desired result may not be achieved in a single glaze firing.
- Never dilute directly in the jars. Mix Diluting Liquid with the desired amount of Lustre Paste NF on a separate plate.



Lustre Paste Refreshing Liquid:

Refreshing Liquid is used to preserve the thixotropic property of the pastes. This liquid is used to recover dried-out pastes and restore them to an optimum, gel like consistency without changing the physical properties. Refreshing Liquid can be used both in the jars and mixed on a separate plate.

Important: Please shake Refreshing Liquid well before use!

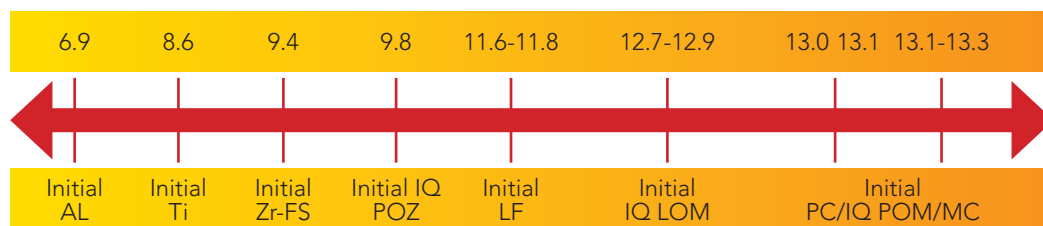
5.0 Firing Chart and CTE

	PREHEATING TEMPERATURE	DRYING TIME	RAISE OF TEMPERATURE	VACUUM	FINAL TEMPERATURE	HOLDING TIME
GC INITIAL MC	480°C	2 min	45°C/min	No	810°C	1 min
GC INITIAL LF	480°C	2 min	45°C/min	No	760°C	1 min
GC INITIAL Ti	480°C	2 min	45°C/min	No	770°C	1 min
GC INITIAL AL*	480°C	2 min	45°C/min	No	810°C	1 min
GC INITIAL Zr-FS	480°C	2 min	45°C/min	No	780°C	1 min
GC INITIAL PC	480°C	2 min	45°C/min	No	810°C	1 min
GC INITIAL IQ POM	480°C	2 min	45°C/min	No	810°C	1 min
GC INITIAL IQ POZ	480°C	2 min	45°C/min	No	810°C	1 min
GC INITIAL IQ LOM	480°C	2 min	45°C/min	No	810°C	1 min

*Note: Lustre Pastes NF should be applied and fired in 2 thin layers when used on GC Initial AL.

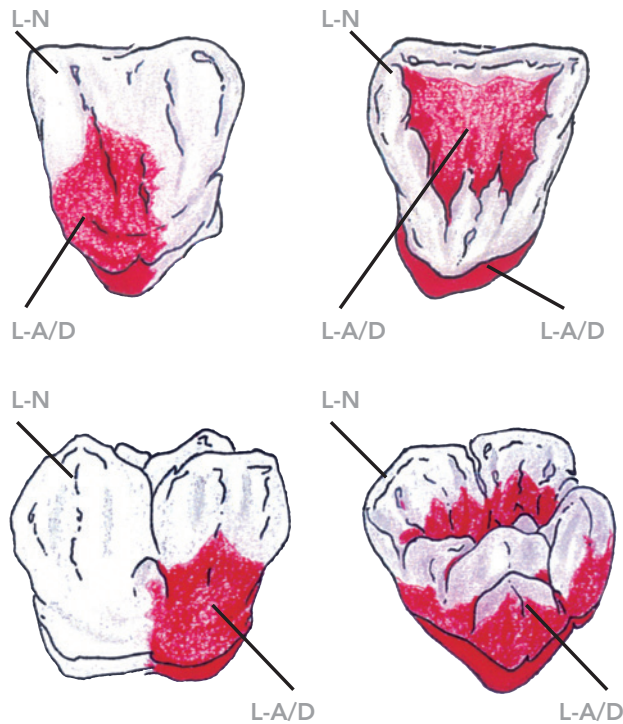
The above mentioned firing parameters are only guidelines and therefore always need to be adjusted to the firing furnace and its correct functionality. The priority is to obtain the right firing result. These firing parameters can only be used as guidelines.

Optimal CTE parameters of GC Initial IQ – Lustre Pastes NF



6.0 Lustre Pastes NF Application

6.1 Basic Colour Combination Chart



Basic application for Vitapan Classic® Shades

L-N: Lustre Neutral

L-A/D: Lustre Body A – D

Shades	A1	A2	A3	A3.5	A4	B1	B2	B3	B4	C1	C2	C3	D2	D3	D4
GC Initial IQ Lustre Pastes Neutral	← L-N →														
GC Initial IQ Lustre Pastes Body Shade	← L-A →					← L-B →			← L-C →			← L-D →			

6.2 Basic Step by Step Instructions

Important Information: Please always stir up material well in the jars before use.



Before applying Initial IQ Lustre Pastes NF, the ceramic restoration is shaped and contoured with diamond burs. After prepolishing with a ceramic polisher the finished crowns & bridges are sand-blasted with 50 microns AlO_2 at 1.5 bar pressure.



Lustre Paste Neutral is applied to the entire surface of the sandblasted restoration. This coating is clearly thicker than what is expected from a normal glaze firing.



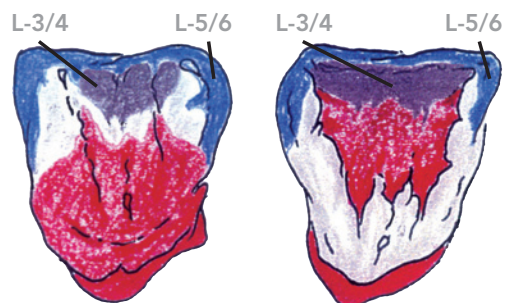
Note: Lustre Pastes NF may NOT come in contact with water.



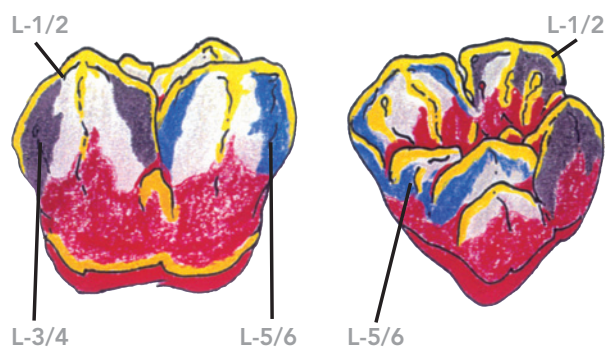
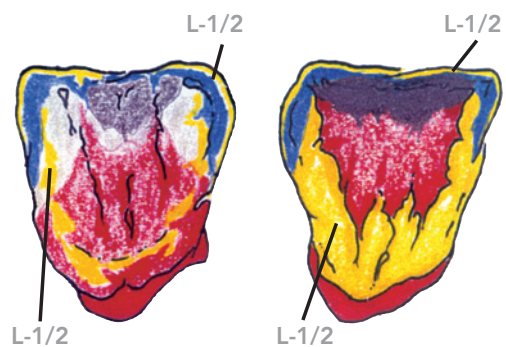
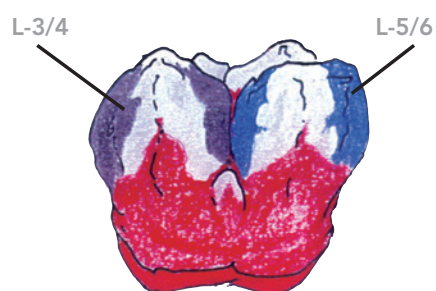
The requested Vitapan Classic® Shade is created by a more or less intensive application of the Lustre Pastes Body A - D. This process, which only takes 2 minutes, is all that is required to create Vitapan Classic® shades.



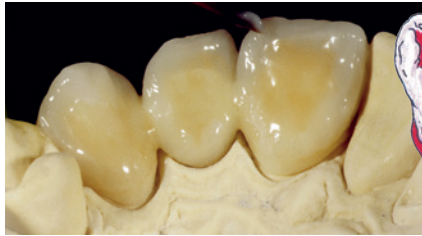
6.3 Advanced Colour Combination Chart



- L-1: Lustre Enamel Effect 1 – Vanilla
- L-2: Lustre Enamel Effect 2 – White
- L-3: Lustre Enamel Effect 3 – Light Grey
- L-4: Lustre Enamel Effect 4 – Dark Grey
- L-5: Lustre Enamel Effect 5 – Light Blue
- L-6: Lustre Enamel Effect 6 – Dark Blue
- L-7: Lustre Enamel Effect 7 – Incisio
- L-8: Lustre Enamel Effect 8 – Olive
- L-9: Lustre Enamel Effect 9 – Value



6.4 Advanced Step by Step Instructions



In order to achieve a higher grey value of the incisal area with darker teeth (A3.5; A4; C3; C4), two grey Effect Shades can be used: L-3 (Light Grey) and L-4 (Dark Grey).



You can use the whitish Lustre Pastes NF: L-1 (Vanilla) and L-2 (White) and L-V (Value) to brighten restorations.



Two bluish effect Lustre Pastes NF, L-5 (Light Blue) and L-6 (Dark Blue), create a bluish opalescent appearance in the incisal area. Lustre Paste NF: L-8 (Olive) offers a greenish effect and can be mixed with all Lustre Pastes NF.



To achieve an even higher transparency the two greyish Effect Lustre Pastes NF L-3/L-4 can be used as well.



All GC Initial MC INvivo Stains can be used with Lustre Pastes NF to achieve even more individualisation.

6.5 Finishing

Whether you choose the basic method, or the advanced method for high aesthetic results, the steps to finalise your work are still the same.



The requested surface texture/smoothness of the Lustre Paste layer can be obtained by soft vibrating or condensing the restoration.



Final result after one firing.

7.0 Where to use Lustre Pastes NF



Lustre Pastes NF can be used with all the different systems of the GC Initial Family, e.g.:

- GC Initial Metal Ceramic Systems (MC, LF, Ti)
- GC Initial IQ Press-over-Metal Concept
- GC Initial IQ One-Body Layering Concepts
- GC Initial Full Ceramic Systems (AL, Zr-FS)
- GC Initial IQ Press-over-Zircon Concept
- GC Initial Pressable Ceramic Systems (PC, LF)

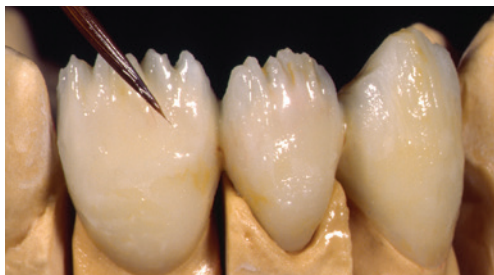
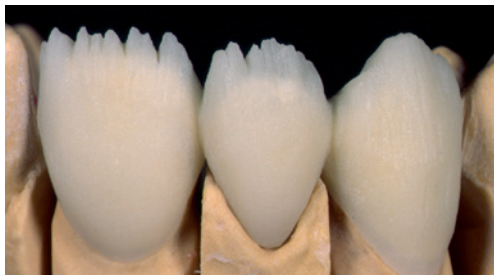
8.0 Tips and Tricks



8.1 Cut Back Technique modified with Initial CL-F



Restorations layered or pressed in the One Body method can be easily reduced with abrasive wheels and discs. Then finishing can be completed with different ceramics from the Initial Family.

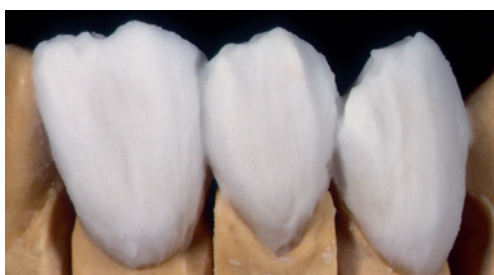


The high transparency of Initial IQ Press Over/ Layering Over ceramics requires additional chroma in the remaining dentin body before you apply the final ceramic layer. Use Lustré Pastes NF colours and fix them with a brief firing onto the dentin body (750°C – 1 minute holding time). To finish, use the firing parameters suitable for the ceramic used.

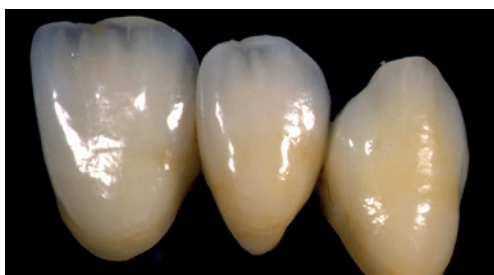




The coloured, fired-on body is covered with CL-F (MC or Zr-FS) and then layered with Opal/Incisal to form the final shape of the tooth. (See also Initial Manual)



The completed glaze fired crowns characterised with Initial Lustre Pastes NF are indistinguishable from polychrome layered restorations.



9.0 FAQ

Basic Rule: What you paint (on) is what you get (after firing)

Q1. How can I dilute (adjust the consistency of) Lustre Pastes NF?

Use Lustre Pastes NF Diluting Liquid to adjust the consistency.

Do NOT use water to dilute. LP should not come in contact with water.

Q2. What can I do when the consistency of Lustre Pastes NF is too dry?

Use the Refreshing Liquid to recover the Lustre Pastes NF in case of dryness.

Q3. How do we change the texture of Lustre Pastes NF?

The requested surface texture/smoothness of the Lustre Pastes NF layer can be changed by soft vibration or condensing the applied pastes.

Q4. I do not have a shiny appearance after firing Lustre Pastes NF. What is the cause?

Check the firing temperatures, increase the final temperature. When Lustre Pastes NF are heavily diluted, or applied in too thin a layer, the glossy effect is tempered, so apply a thicker layer/dilute the pastes less.

Q5. Can I apply more than one layer of Lustre Pastes NF?

Yes, you can do further firings, keeping the same firing temperatures.

Q6. Can I mix Lustre Pastes NF with other Initial powders?

You can use the GC Initial Stain powders to intensify Lustre Pastes NF. Mix the required amount of stain powder with LP NF Diluting Liquid and mix it with the required LP NF or directly mix the stain powders with, for instance, Lustre Paste Neutral (L-N).

Q7. I have finished my veneered crown (MC/LF) and I want to use Lustre Pastes NF without losing the surface texture of the prepared crown.

You can easily dilute the LP to have the optimal consistency in order to apply a thin layer and not lose the surface texture and achieve a nicely coloured and shiny crown.

Q8. Are Lustre Pastes NF abrasion resistant?

Yes, the LP NF are a special mixture of different types of low fusing ceramic particles, stains and glaze offering colour deepness, lifelike translucency and wear resistance.

Q9. I have to change the colour, brightness or the grey value of a crown made with the layering technique. What can I do?

Use Lustre Pastes NF as shown on page 15 to modify your crown and bridge work.

Q10. May I use Lustre Pastes NF for AL in the same way I use it for other materials?

No, you should apply and fire Lustre Pastes NF in two thin layers.

Q11. After firing, the colour of my work is spotted?

The Body Colour needs to be massaged into the Lustre Paste Neutral (L-N) on your crown or should be mixed equally on an external mixing palette in advance. To disperse the colour pigments it is necessary to condense Lustre Pastes NF before the glaze firing using soft vibration.

Q12. The colour doesn't fit with the Vita® Classic Shade guide?

Different material thicknesses create different colour effects. It may be necessary in individual cases to mix an A-Body Colour with a B-Body or even with L8 (Olive). A visual check is always possible.

Q13. The glaze firing is spotted or cracked?

Lustre Pastes NF have come partly or completely in contact with water.



GC Australasia Dental Pty Ltd
1753 Botany Road, Banksmeadow,
NSW 2019, Australia

T: +61 2 9316 4499
F: +61 2 9316 4196
www.gcasia.info