

GLASS IONOMER CEMENT RESTORATIVES

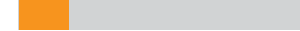
Fuji® BULK
(Auto-cure GIC)



Restorations where acid resistance, protection of surrounding surfaces and speed of bulk cure are priorities

- Selected occlusal, proximal and cervical restorations
- Sandwich restorations - closed and open
- Transitional restorations

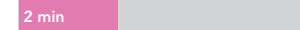
Manipulation time



Moisture critical time



Finishing time



- 1 shade (A3 opaque)
- High opacity

Before



After



Dr. G. Mlilich

Fuji® VIII GP
(Auto-cure, resin-reinforced GIC)



Cervical and sandwich technique restorations where acid resistance, fracture toughness and speed of placement are priorities

- Sandwich restorations - closed and open
- Cervical restorations
- Transitional restorations

Manipulation time



Moisture critical time

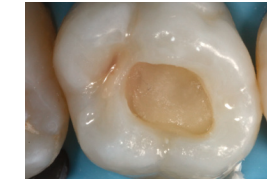


Finishing time

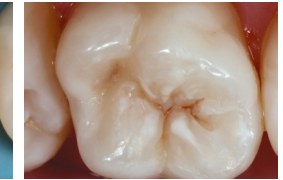


- Shades: A2, A3, A3.5
- Very good translucency

Before



After



Dr. J. Smithson

Application time of resin bond for sandwich restorations:
a. Immediate for hydrophobic resin bond, eg Stick Resin
b. 3 min for hydrophilic resin bond eg G-aenial Bond.

Fuji® II LC
(Tri-cure, resin-reinforced GIC)



Cervical and sandwich technique restorations where acid resistance, fracture toughness and speed of set are priorities

- Sandwich restorations - closed and open
- Cervical restorations
- Transitional restorations

Manipulation time



Moisture critical time (Light-cure)



Finishing time



- Shades: A1, A2, A3, A3.5, A4, B2, B3, B4, C2, C4, D2
- Excellent translucency

Before



After



Dr. S. Saito

Place in 2 mm increments and light-cure.

Fuji® VII EP/Fuji® VII
(Auto-cure GIC)



Protection of "at-risk" surfaces, including erupting molars (fissure protection) and exposed root surfaces, and for caries stabilisation

- Fissure protection
- Protection of root surfaces
- Endo access
- Caries stabilisation

Manipulation time



Moisture critical time



Finishing time



- Shades: White and Pink
- High opacity

Before



After



Dr. J. Lucas

Fuji® IX GP EXTRA
(Auto-cure GIC)



General purpose "all rounder" GIC where aesthetics are a priority

- Selected occlusal, proximal and cervical restorations
- Sandwich restorations - closed
- Transitional restorations

Manipulation time



Moisture critical time



Finishing time



- Shades: A2, A3, A3.5, B1, B3, C4
- Excellent translucency

Before



After



Dr. H. Ngo

Fuji® IX GP FAST
(Auto-cure GIC)



General purpose "all rounder" GIC

- Selected occlusal, proximal and cervical restorations
- Sandwich restorations - closed
- Transitional restorations

Manipulation time



Moisture critical time



Finishing time



- Shades: A2, A3, A3.5, B2, B3, C4

Before



After



Dr. H. Ngo

Glass Ionomer Cements Usage Guide

100 years of innovation translated into high-quality restorative materials that continue to promote a healthy and long-lived society.

KEY POINTS

GIC Manipulation Time includes an initial wet and glossy stage, which is essential for establishing chemical bonding to the tooth. This is followed by a short gel stage where contouring of the restorative material is possible. The end of the manipulation time is reached shortly after the loss of surface gloss of the restorative material.

GIC Moisture critical time is the period from start of mix where moisture contamination of the restorative material should be avoided. If isolation cannot be guaranteed during restorative procedures, immediately apply a light-cured resin coating to the restoration (eg EQUIA® Forte Coat). For surface protection (eg applying Fuji® VII EP to an erupting molar), COCOA BUTTER is the preferred method of moisture protection.

The term “selected restorations” refers to non-load bearing restorations in permanent teeth.

ACCESSORIES



CAVITY CONDITIONER



EQUIA® Forte Coat



COCOA BUTTER

