



Fuji II LC

*A Perfect  
Choice*

*GC*

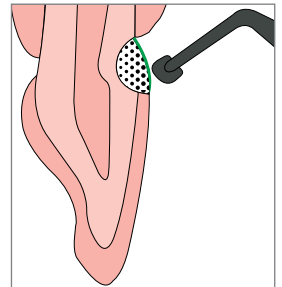
# Fuji II LC IS A REMARKABLE RESTORATIVE MATERIAL

The world's first resin-reinforced glass ionomer has remained the benchmark for light cured glass ionomer cements, delivering more than 15 years of exceptional performance to clinicians all around the world.

Dr. G. Knight



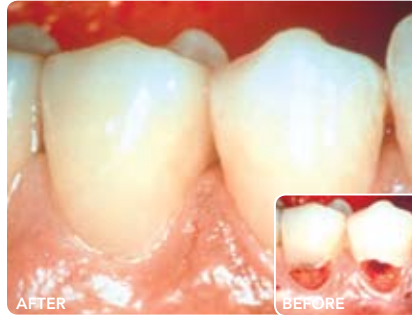
Now Fuji II LC is even further enhanced with G-COAT PLUS. G-COAT PLUS is a tough, self adhesive, single dispersion nano-filled resin used as a final protective coating to give Fuji II LC restorations a highly wear resistant surface with exceptional polish retention.



## Fuji II LC – the perfect choice for a wide range of indications

### Fuji II LC is your perfect choice for restoring:

- > Cervical lesions
  - Carious
  - Erosion
  - Abrasion
  - Abfraction
- > Proximal lesions (both primary and permanent dentition)



### Fuji II LC can be used as:

- > A base/liner under composite in the sandwich technique
- > A core build up material
- > A fissure sealant
- > An adhesive for bonding orthodontic brackets



# SUPERIOR CHARACTERISTICS MAKE Fuji II LC THE PERFECT CHOICE



## Clinically proven retention

Fuji II LC has repeatedly exceeded the performance of resin bonded composite in class 5 clinical trials and is clinically proven as the first choice of restorative material for restoring both carious and non-carious cervical lesions.

*“Fuji II LC, at 5 years, has demonstrated exceptional clinical performance in both retention and sealing of the tooth.”*

**“100% retention.”**

Clinical evaluation of a resin-modified glass ionomer restorative: Five year results.  
Boghosian A, Ricker J, McCoy R. J Dent Res 1999; Spec issue 78, abst no 1436)

## Strong adhesion

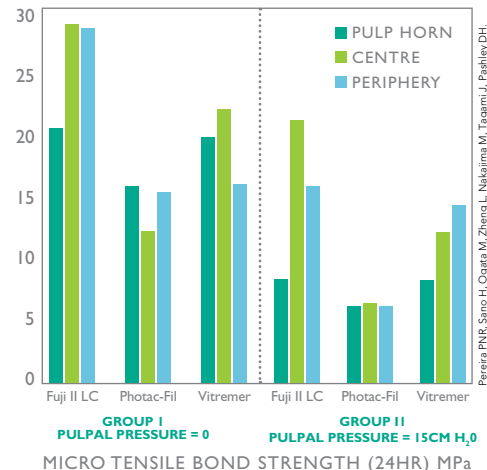
Strong, consistent adhesion is the foundation for the success of Fuji II LC. As a water based cement Fuji II LC is moisture tolerant during placement with a free flowing consistency to ensure optimum wetting of the tooth surface during placement.

Stability of adhesion is achieved through the strong chemical bonding of Fuji II LC to dentine, enamel and cementum. A coefficient of thermal expansion

similar to tooth structure and good stress absorbing characteristics within the cement structure help maintain the integrity of the seal.

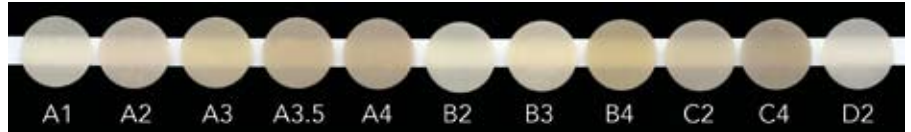
The reported high bond strengths of Fuji II LC to dentine and enamel are achieved through resin reinforcement of the glass ionomer structure. Proof of the strength of this adhesion is found in the clinical success reported when Fuji II LC is used as an orthodontic adhesive for bracket bonding.

Effect of region and dentin perfusion on bond strengths of resin modified glass ionomer cements



## Aesthetic

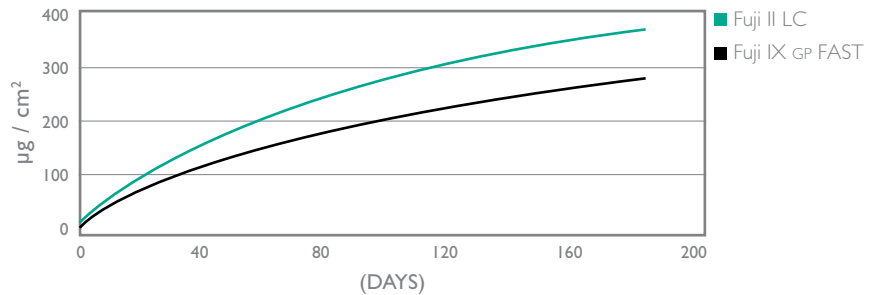
Fuji II LC has a wide selection of shades, enamel-like translucency and good long term colour stability.



## Fluoride releasing

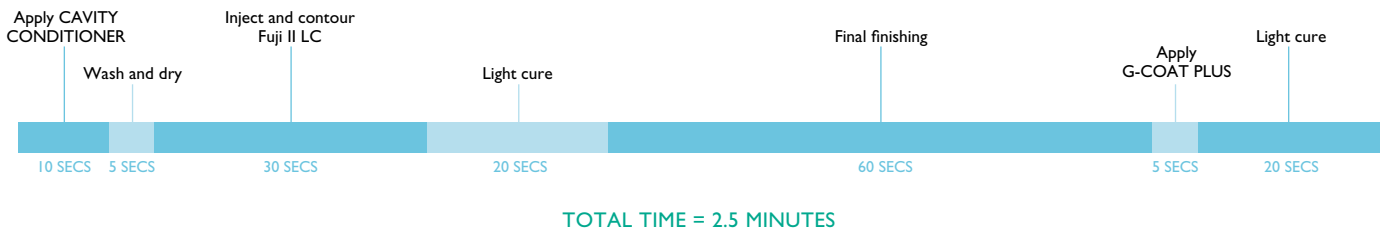
Fuji II LC has significant levels of fluoride release to help protect surrounding and adjacent surfaces. Fuji II LC is rechargeable and able to uptake fluoride from external sources.

Mean cumulative fluoride release of Fuji II LC vs Fuji IX GP FAST



## Fast application

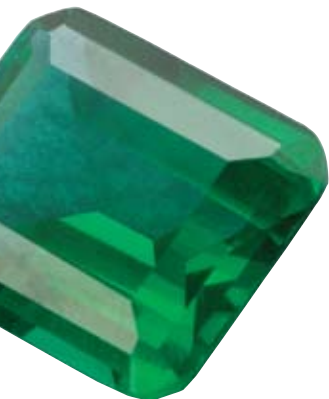
Fuji II LC is a self-adhesive restorative material that is moisture tolerant, simple to use, quick to apply and is ready for final finishing immediately following 20 seconds light curing.



# CLINICAL APPLICATIONS OF Fuji II LC

## Restoring carious lesions

Patients with reduced salivary flow are at increased risk of caries. Fuji II LC is recommended for the aesthetic restoration of these lesions due to its excellent retention and high level of protection through ongoing fluoride release.



Cervical caries



Cavity preparation



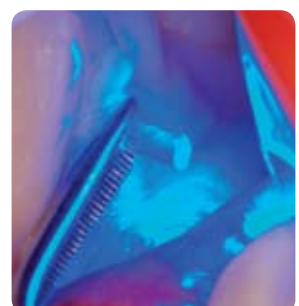
Apply CAVITY CONDITIONER, wash and gently dry



Inject Fuji II LC shade A3 and contour with a clear cervical matrix



Seating the matrix ensures optimum adaptation to the cavity and margins



Light cure for 20 secs



After excess removal minimal finishing is required



Apply G-COAT PLUS and light cure



Completed restoration

## Restoring erosion lesions

Patients with acidic oral environments will frequently suffer from cervical sensitivity and subsequent development of erosion lesions. Fuji II LC is recommended for the aesthetic restoration of these lesions due to its acid resistance and strong adhesion which provides effective desensitisation.



Erosion lesions



Apply CAVITY CONDITIONER



Fuji II LC shade A3 is applied to the cervical portion of 44 and 45



Fuji II LC shade A2 is applied to 43, 44 and 45



Contouring with a fine diamond at slow speed



Completed restorations

Dr. G. Knight

## Acid resistant

Fuji II LC exhibits good acid resistance and is the first choice material for patients with reduced salivary flow and exposure to frequent acid challenges.

## The best delivery system

Fuji II LC has excellent capsule to capsule consistency and the best possible access through its long curved fine-tip nozzle.



## Restoring proximal lesions

Fuji II LC is a self adhesive material which is quick and simple to place in proximal lesions providing ongoing protection to surrounding and adjacent tooth surfaces. Fuji II LC is ideal for restoration of anterior proximal lesions in primary dentition.



Proximal caries



Cavity preparation



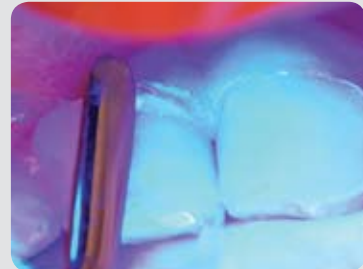
Apply CAVITY CONDITIONER



Inject Fuji II LC



Close matrix



Light cure 20 seconds



Final finishing



Completed restoration

Dr. J. Lucas





# ACHIEVING OPTIMUM CLINICAL RESULTS WITH Fuji II LC

## 1. Cavity preparation



Remove caries.



Clean cavity with a slurry of pumice and water. To help with isolation retraction cord can be placed. In addition to displacing gingival tissues, retraction cords prevent sulcular fluids from contaminating the gingival margin of the glass ionomer during the brief moisture critical period.

## 2. Conditioning



Apply CAVITY CONDITIONER - 10 secs.

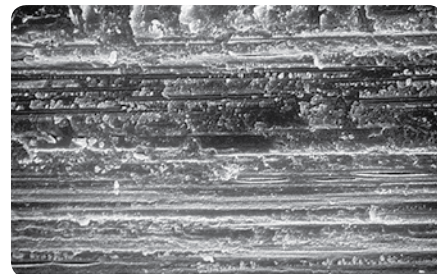


Wash off conditioner (and remove the moist retraction cord).

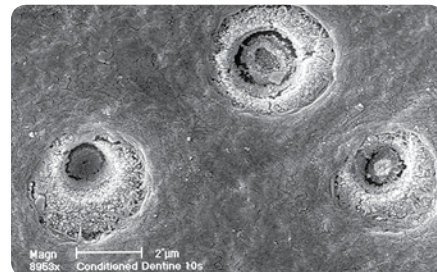


Dab dry with a cotton pellet to remove surface moisture and avoid dehydration.

CAVITY CONDITIONER is recommended to remove surface debris left following cavity preparation. Conditioning also improves the surface energy so that Fuji II LC can better flow and adapt to the cavity walls. The polyacrylic acid in CAVITY CONDITIONER prepares dentine and enamel for chemical adhesion without opening the dentine tubules.



Dentine surface with smear layer intact



Dentine surface after treatment with polyacrylic acid conditioner

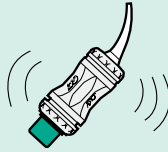
### 3. Matrix selection



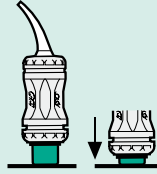
A clear matrix is the quickest way to form Fuji II LC and will minimise finishing time. The matrix should be tried on the tooth prior to mixing of the cement.

### 4. Activate capsule. Mix for 10 secs.

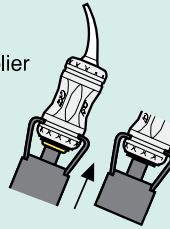
**A** Shake or tap to loosen powder.



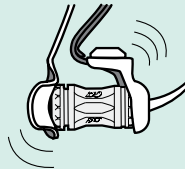
**B** Depress plunger.



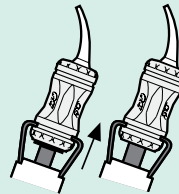
**C** Click once in capsule applicator to activate.



**D** Mix for 10 seconds.



**E** Two clicks to prime capsule then syringe slowly.



### 5. Place Fuji II LC



Inject the mixed cement directly onto the cavity surface. Fuji II LC has a free-flowing consistency to ensure good adaptation to the cavity to optimise adhesion. Position the matrix firmly.

### 6. Light cure and clean up



Light cure for 20 seconds through the matrix. Remove the matrix and light cure for a further 20 seconds.



Trim excess using a fine diamond finishing bur with air/water spray at low speed. If required polish with air/water spray at slow speed.

### 7. Apply G-COAT PLUS

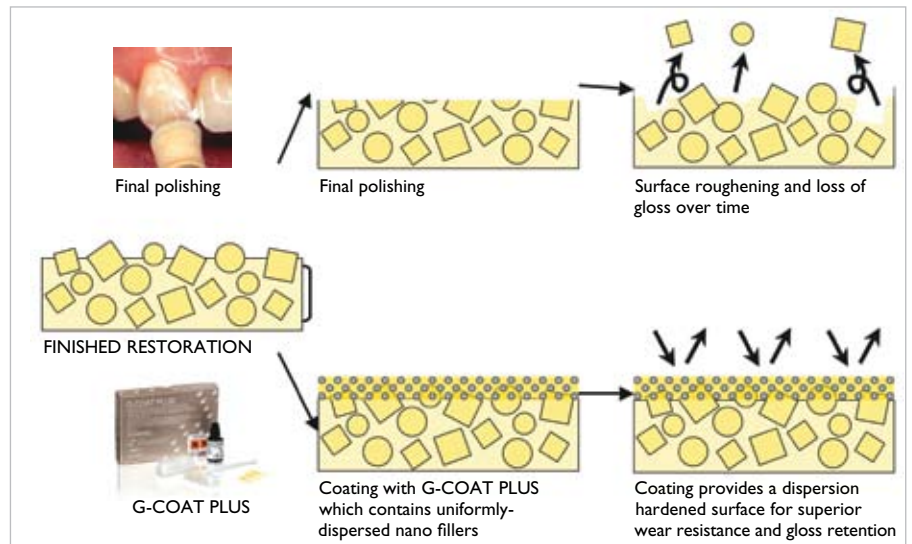


Finish with a single application of G-COAT PLUS and light cure for 20 seconds. G-COAT PLUS bonds to Fuji II LC providing a wear resistant surface that will enhance longevity and polish retention of the restoration.

### 8. Completed restoration



Dr. A. Yap





## GC GOLD LABEL 2LC

15g Powder, 8g Liquid

**Shades:** A1, A2, A3, A3.5, A4, B2, B3



## FUJI II LC

Box 50 capsules

**Shades:** A1, A2, A3, A3.5, A4, B2, B3, B4, C2, C4, D2

**Assorted:** Contains 10 capsules each of A4, B2, B3, C2;  
5 capsules each of B4, D2



## G-COAT PLUS

**Contains:**

1 x 4ml bottle of G-Coat PLUS

50 x micro-tips

1 x micro-tip applicator

20 x disposable dispensing dishes



## CAVITY CONDITIONER

6g (5.7ml) bottle



GC Asia Dental Pte Ltd  
Changi Logistics Centre  
19 Loyang Way #06-27 Singapore 508724  
Tel 65 + 6546 7588 Fax 65 + 6546 7577  
www.gcasia.info Copyright © 2008