

The art of painting ceramics



initial[™]
Painting Solutions

Lustre Pastes ONE
Spectrum Stains

GC

Paint your aesthetics with Initial™ from GC

GC offers the Initial users aesthetic paintable ceramic solutions.

Depending on the case and desired properties, two product lines, Initial Lustre Pastes Family and Initial Spectrum Stains, will provide the expected outcome. They are suitable for a wide CTE-range allowing you to work with the complete GC Initial ceramic range and nearly all types of other ceramics.

Initial Lustre Pastes ONE, the unique 3D paintable ceramics from GC, bring fluorescence, depth and authenticity to all your precious works ... just by painting. You no longer need complex layering or extra firing cycles to obtain a natural glaze for all your restorations.

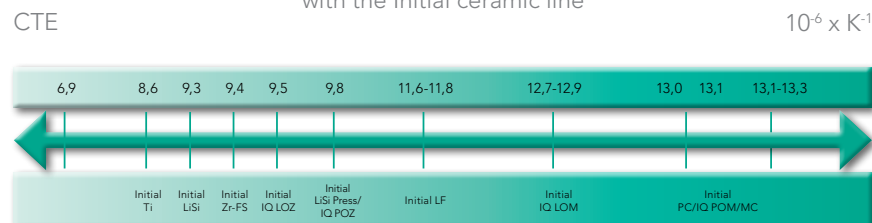
Initial Lustre Pastes GUM Shades are based on a thoughtful selection of non-fluorescent, pink coloured ceramic particles to perfectly mimic the look of natural gums. A lifelike transition from the crown margin to the gingiva can easily be achieved.

Initial Spectrum Stains offer a 2D staining effect and can be used for internal as well as external staining. They will provide a very refined end result with a glossy surface while conserving the texture.

Lustre Pastes and Spectrum Stains are complementary. In some cases they are used together; for example, the Spectrum Stains can be added to the Lustre Pastes ONE or to the ceramic build-up powders.



Compatibility of Lustre Pastes Family & Spectrum Stains with the Initial ceramic line

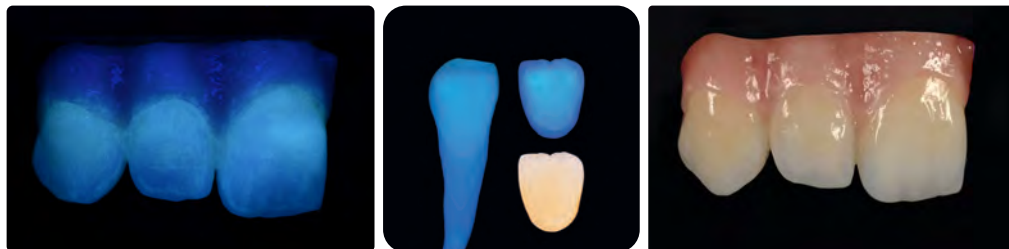


Lustre Pastes ONE V-Shades

With the "Body A-D" shades, the required V-shade can be obtained very easily and in no time. With the other available effect shades, you can further characterise the restorations for a perfectly assimilated end result.



Optimal fluorescence level.
Ensures the look of natural teeth under all light circumstances.



Lustre Pastes NF GUM

The 5 unique gum coloured Lustre Pastes allow an individual adaptation, to match natural gingival shades in natural harmony. You can use the 4 mixable Gum Modifiers allowing for unlimited creativity and to reproduce the most delicate gum case without any problem.



Spectrum Stains

Initial Spectrum Stains are powder stains available in a variety of 20 colours empowering the aesthetics of your restorations.

Regardless the way of application, a very fine end result will be obtained maintaining the surface texture and assuring an optimal gloss level.



Skin deep beauty with Initial Lustre Pastes ONE

The perfect finish to your restorations

You no longer need complex layering or extra firing cycles to obtain vitality and natural glaze to all your restorations.

With Initial Lustre Pastes ONE, you can have fluorescence, colour deepness and lifelike translucency ... just by painting.

Initial Lustre Pastes ONE are based on a special mix of fine ceramic particles. The steps to complete your workpieces remain identical, regardless of the technique used to create the base.

By using the diluting liquid, the optimal consistency is kept until the end.

The required V-Shade is created by application of the Lustre Pastes ONE "Body A-D". This process comprises everything that is needed to create V-shades in no time.

For enhanced characterisation, simply use the other available colours to create highly aesthetic results.



Base



Application of LP ONE Neutral Fluo



Application of Body Shades



Final Restoration showing colour and gloss

Easy modifications

With Initial Lustre Pastes ONE you can easily modify your workpieces.

Changing colour, brightness, grey value or adding extra surface gloss has never been so easy!



Brightness



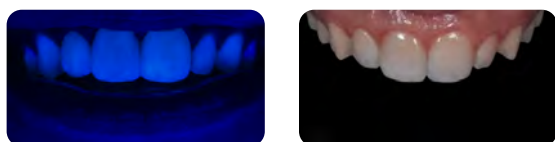
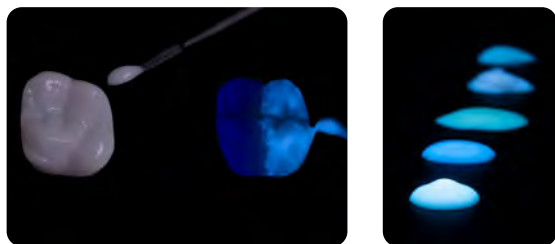
Colour



Grey value

Paint-on ceramics allow a concrete representation of the most subtle emotions

The Lustre Pastes ONE, with improved fluorescence, are especially developed to boost the fluorescence of your monolithic restorations and ensure the look of natural teeth under all light circumstances.

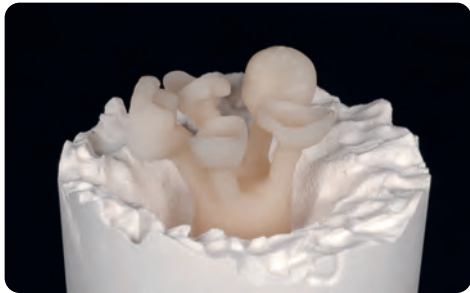


Lustre Enamel Effect – Opal
Highly opalescent base paste for use in the incisal area.

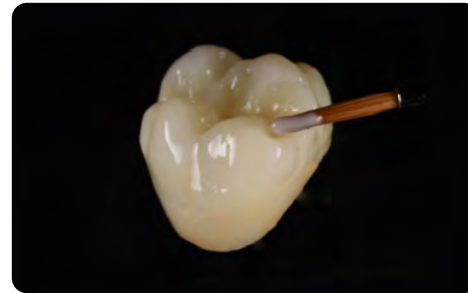
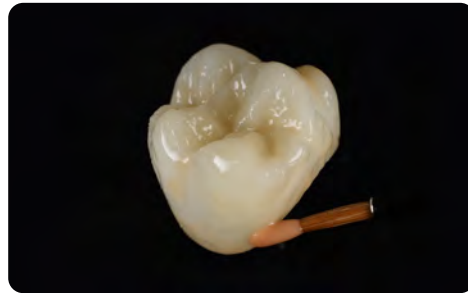


Add character to your one body restorations ...

The unique consistency ensures homogeneous modifications and appearance. The requested surface texture/smoothness of the Lustre Pastes ONE layer can be obtained by gently vibrating or condensing the restoration. No complex layering or extra firing cycles required; it is fast, easy and secure. The pastes are ready-to-use with a fine thixotropic property, for easy and precise application.



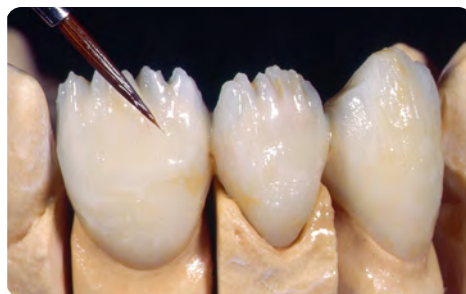
Full anatomical frameworks in lithium disilicate such as LiSi Press can be individualised with Lustre Pastes ONE.



... or embed them in the layers for in-depth effects.



Cut back



Application of Lustre Pastes ONE (+firing)



Application of Opal/Incisal Masses (+firing)



Final result

Achieve aesthetic results by using the Initial Lustre Pastes ONE in the cut-back technique with your pressed or layered workpieces. After painting with Lustre Pastes ONE, the finishing touches are done with dedicated GC Initial veneering ceramics: CL-F for high translucency and Opal and Enamel masses for incisal effects.



Paint your red and white aesthetics ...

Two sets, one approach.



Starting point



Application of the different Initial Lustre Pastes NF Gum Shades



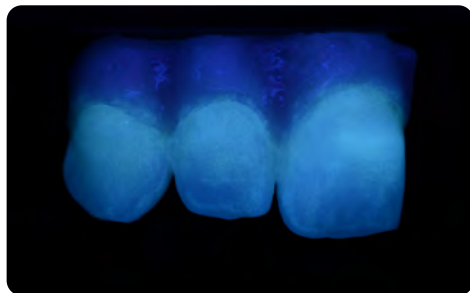
Characterisation with LP ONE V-Shades



Final result



... with transitions, even on zirconia frameworks.



The Lustre Pastes ONE optimal fluorescence level ensures the look of natural teeth under all light circumstances and are used as color & individualization layer in combination with Initial SQIN in the micro-layering technique.

With the increasing popularity of zirconia and CAD/CAM produced restorations, GC offers solutions to maintain the same aesthetic standards. Your monolithics will look natural and vibrant with Initial Lustre Paste ONE & NF GUM. Their unique composition offers more interaction with the underlying ceramic material and acts optically like ceramic build-up powders, boosting the 3D effect of your restoration. Simplicity can be beautiful!



Widen your staining possibilities with Initial Spectrum Stains

Initial Spectrum Stains contain pigments that are sintered inside a feldspar matrix for stability and to allow reproducible, consistent results. You can vary and play endlessly with the Initial Spectrum Stains. Use them for internal as well as external staining. They can also be added to the ceramic masses or to the Initial Lustre Pastes ONE to increase the possibilities even more!

Two consistencies, both preserving texture

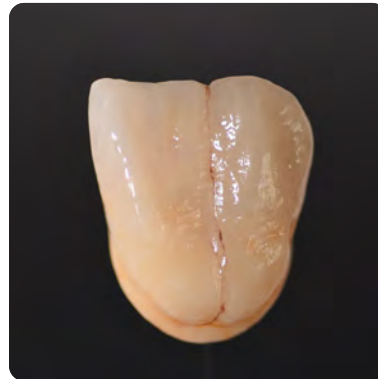
Initial Spectrum Stains can be applied in the user's preferred consistency, as a paste or more liquid. Regardless of the used consistency, the end result will be the same: staining and gloss with very fine definition, preserving the surface texture of the restoration; they are the 2D counterpart of the Initial Lustre Pastes ONE.



Crown with fine texture ready to be glazed



Glazing with liquid or paste consistency



After firing: stained and glazed with preservation of fine texture



Stain internally ...



... or externally



2D and 3D ceramic painting solutions ... from GC

GC Initial Lustre Pastes ONE Set - V-Shades

- 4 Body Shades, 1 Neutral and 1 Neutral Fluo to achieve a V-shade restoration in the easiest way.
- 11 Effect Shades to release your artistic potential and paint white spots, decalcifications, hair lines and crack lines.

Set composition:

1x Neutral (4g)
1x Neutral Fluo (4g)
1x Value (4g)
4x Body Shades (4x4g)
11x Enamel Effect Shades (11x4g)
1x Diluting Liquid (8ml)
1x Refreshing Liquid (8ml)
1 Mixing dish
2 Brushes
Colour Chart
Technical Manual



GC Initial Lustre Pastes NF Set - Gum Shades

- 5 ready-to-use gum coloured pastes with an ideal thixotropy for easy and precise application.
- 4 mixable Gum Modifiers allowing unlimited creativity to copy natural gingival harmony.

Set composition:

5x Gum Shades (5x4g)
4x Stain Modifier for LP NF (4x3g)
Diluting Liquid (8ml)
Refreshing Liquid (8ml)
1 Mixing dish
2 Brushes
Colour Chart
Technical Manual



GC Initial Spectrum Stains

- 20 powder stains empowering aesthetic refinement.
- Two consistencies with a refined end result, preserving texture and rendering an optimal gloss level.

Set composition:

16x Initial Spectrum Stains SPS-1 - SPS-16 (16x3g)
1x Initial Spectrum Glaze Powder GL (10g)
1x Initial Spectrum Glaze Liquid (25ml)
1x Initial Spectrum Glaze Paste Liquid (8ml)
1x Initial Spectrum Stains Shade Guide
Colour Chart
Technical Manual

Available as refill:

GC Initial Spectrum Glaze Powder
GL-FLUO (10g)
GC Initial Spectrum Stains
SPS-17 - SPS-20 (3g)



GC Australasia Dental Pty Ltd
1753 Botany Road Banksmeadow
NSW 2019 Australia

T: +61 2 9301 8200
E: info.australasia@gc.dental
www.gcaustralasia.com



Since 1921
100 years of Quality in Dental