

GC Fuji TEMP LT



A new Long Term Glass Ionomer
Provisional Luting Cement

GC

GC Fuji TEMP LT is the first paste-paste conventional glass ionomer cement

Its advanced formulation offers the security of glass ionomer chemistry, ease of use from convenient paste pak dispensing and optimised handling and physical properties ideal for long term provisional cementation.

It is indicated for:

- Temporary (provisional) cementation of all types of all-ceramic, resin and metal-based crowns and bridges on implant abutments
- Temporary (provisional) cementation of all types of resin, acrylic, all-ceramic and metal-based crowns and bridges.

Stable, reliable retention

GC Fuji TEMP LT is formulated with stability and durability in mind. Many traditional temporary cements degrade rapidly over time, compromising their usefulness for cementation of longer term temporaries.

GC Fuji TEMP LT features a traditional glass ionomer matrix to provide durability and chemical sealing, but with inert fillers incorporated to significantly reduce its strength so that it provides sub-optimal but sufficient retention properties, allowing future safe removal of indirect restorations, ie 'soft-access'.

Paste A

Glass ionomer filler
Water
Glycerol
Silica filler (various)
Pigment



Paste B

Polyacrylic acid
Water
Barium Sulphate
Silica filler (various)
Glycerol

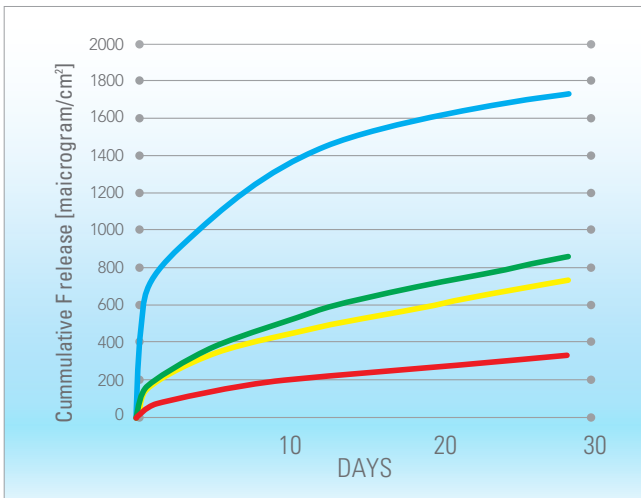


A durable seal

The glass ionomer reaction within GC Fuji TEMP LT provides the security of a chemical seal with dentine. This, combined with its smooth consistency, allows intimate wetting of abutment surfaces ensuring no gaps. This minimises the risk of biofilm development between the abutment and restoration and helps prevent sensitivity.

Significant fluoride release

GC Fuji TEMP LT provides the highest level of fluoride release, offering extra protection for surrounding tooth surfaces.

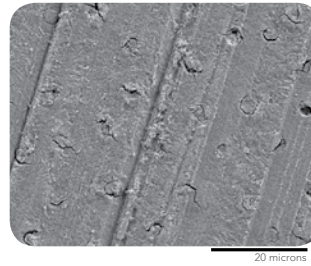


— Fuji TEMP LT — Fuji VII (Triage) — Fuji IX EXTRA — Fuji I

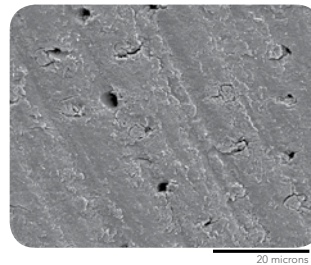
No compromising permanent cementation

GC Fuji TEMP LT won't compromise the adhesion of permanent cements whether they be resin cements, self etching resin cements (eg G-CEM), resin reinforced glass ionomer cements (eg Fuji PLUS, FujiCEM) or conventional glass ionomer cements (eg Fuji I).

The dentine surface is left clean and uncompromised after removal of residual GC Fuji TEMP LT cement prior to final permanent cementation procedures.

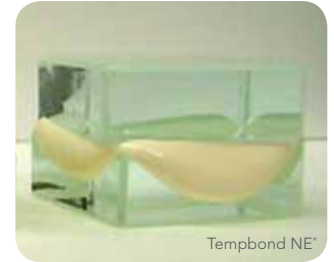
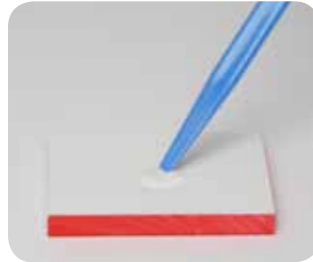


SEM dentine before temporary luting



SEM dentine after removal of GC Fuji TEMP LT temporary luting. The surface is left clean and uncompromised.

GC Fuji TEMP LT is easy to use



Exact dispensing – you control the amount dispensed. Each cartridge provides up to 60 cement applications.

Easy mixing – the paste consistency is quick to mix and blends easily to form a smooth consistency.

Effortless seating – just 6 micron film thickness, and extruded excess cement won't run or drip excessively.

Simple clean up

GC Fuji TEMP LT doesn't flow once the provisional is seated, so excess cement remains around the margins and is easily removed approx 1 minute after seating. As added security GC Fuji TEMP LT has strong radiopacity to help identify any cement remnants in the unlikely event that extruded excess cement wasn't cleaned away from a margin.



Dr K Ohtani, Japan

GC Fuji TEMP LT Clinical Case

Temporary cementation of final implant restorations



Implant abutment #30, #31



GC Fuji TEMP LT is applied to the internal margin area of the final metal ceramic restorations



The optimum cement quantity is placed with consideration to the future removal of the restoration for regular maintenance



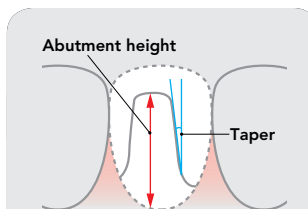
Approx 1 minute after seating the excess cement is removed while in its rubbery stage.



Floss is used to remove excess cement from proximal areas



Completed restoration after cementation



GC Technique tip 1:

For abutments with a height above 3.5mm, small tapers and tight fitting crowns it is recommended to apply a thin layer of separating medium on the abutment, eg. GC Cocoa Butter, to reduce the potential for too strong retention.



GC Technique tip 2:

After temporary crown removal the residual cement should be gently dried with air then removed using a scaler.



GC Fuji TEMP LT

Glass ionomer provisional luting cement

Paste Pak Cartridges (2) 13.3gm/7.2ml, with mixing pad



Paste Pak Dispenser



FREEGENOL TEMPORARY PACK

Eugenol Free Temporary Luting Cement

1-1 Pack (20ml base, 20ml accelerator, cleaner, mixing pad)

GC Permanent Luting Cements:



GC Fuji PLUS



GC Fuji I



GC FujiCEM



G-CEM capsule



GC Asia Dental Pte Ltd
 Changi Logistics Centre
 19 Loyang Way #06-27 Singapore 508724
 Tel +65 6546 7588 Fax +65 6546 7577
www.gcasia.info

Copyright © 2011
 oa TEMP LTTGIC 01/11